

Historic, Archive Document

Do not assume content reflects current scientific knowledge, policies, or practices.

62.57

Princeton Nurseries

LIT
REC'D
★ AUG 70 1920 ★
U.S. DEPARTMENT OF AGRICULTURE



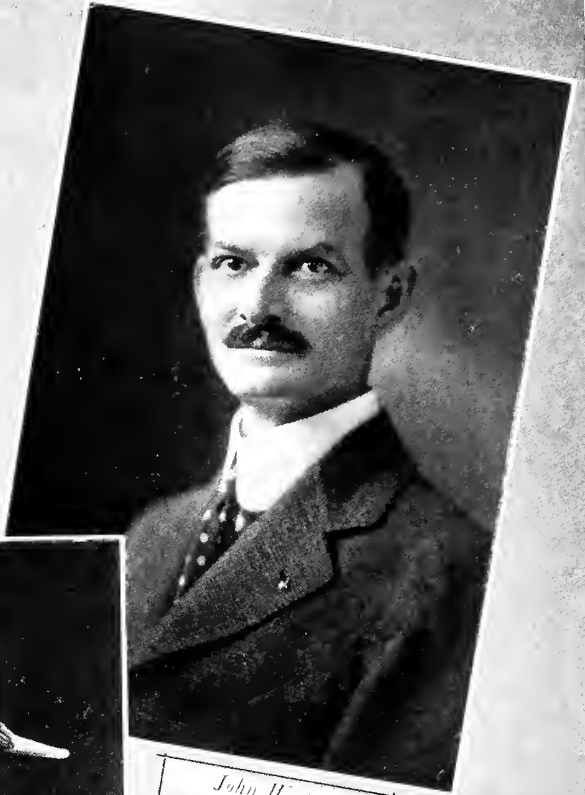
*Cleveland Tower
Graduate College, Princeton University*

.....

Princeton Nurseries
Princeton, New Jersey
1 9 1 7



William Flemer



John Watson



William Flemer, Jr.
"Sonsbehere is Franer"



Frank L. Waterhouse



F. Burnette Kelley
Traveling Representative

A P O L L O G Y



ONE would seem to be called for by the circumstance of launching a new nursery enterprise: but it seems to us that there should be room for a business catering exclusively to the Trade; and here in Princeton we have what we consider the best nursery land in the country—for our purpose.—We are growing largely Conifers and Boxwoods, Azalcas, the better class of deciduous shrubs and Shade Trees and the kinds of stock not always easiest to produce and yet for which a demand exists. As to location, we are in a half-way situation: we can grow many desirable plants not hardy further North, and we can also grow the hardier varieties, having thus a large assortment suitable to a wide territory.

Our place is new and our business is young. We are offering in this, our second list, only what we have of our own growing. We can, however, fill out complete lists for our customers by drawing on other sources of supply, and shall be glad to do that. We have now 265 acres, 175 of which are already planted in nursery stock. The photographs of our buildings are shown in order to give our friends some idea of what our equipment is. The pictures of the men interested in and operating the plant, are shown in the idea that probably others feel as we do: We like to know the men we do business with; acquaintance helps to understanding; it is impossible to separate the personal element from business and it is well to have it so. It is always easy and pleasant to do business with men you know.

THE STOCK OFFERED in this list is all of our own growing, in our own nurseries; we produced it; we know what it is; it is all our own stock and includes no job-lots, no fence-corner-surplus, no orphaned-swaps. It is grown for the *Trade*—for other nurserymen and florists. We do not sell to department stores, nor place our stock in the 5 & 10 cent stores in competition with our customers, the nurserymen, directly or indirectly, under our own name or under any alias. We have no criticism to offer regarding those whose policy may be different, but it seems to us proper to make our own policy known.

REFERENCES. As to our financial responsibility, we refer to the First National Bank and the Princeton Bank & Trust Co., both of Princeton, N. J.

TERMS. Sixty days net.

PRICES quoted herein cancel all previous offers and are subject to change without notice to conform from time to time to changing market conditions.

PACKING. For loading trees in bulk, there will be no charge; if goods are boxed or baled the material used will be charged for at cost.

COMPLAINTS, if any, for any cause, must be made within five days after arrival of goods.

Orders are accepted upon the condition that they shall be void in case of crop failure or injury from frost, drought, or any other causes beyond our control.

WARRANTY. While we exercise the greatest care to have all our trees and plants genuine and true to label, and hold ourselves prepared to replace on proper proof all that may prove otherwise, we do not give any warranty expressed or implied; and in case of error, it is mutually agreed between the purchaser and ourselves that we shall not be liable for a greater amount than the original price of the stock.

We warrant all our stock to be in good condition at time of shipment. Goods travel at the risk and cost of the purchaser.

SHIPMENT. Correspondents are requested to indicate whether they want goods shipped by express or by freight. In the absence of instructions, we shall use our judgment in the purchaser's interest.

LOCATION. We are located just half-way between Philadelphia and New York on the main line of the Pennsylvania Railroad, and nurserymen and florists are always welcome; on notice, we shall be very glad to meet any train at Princeton.

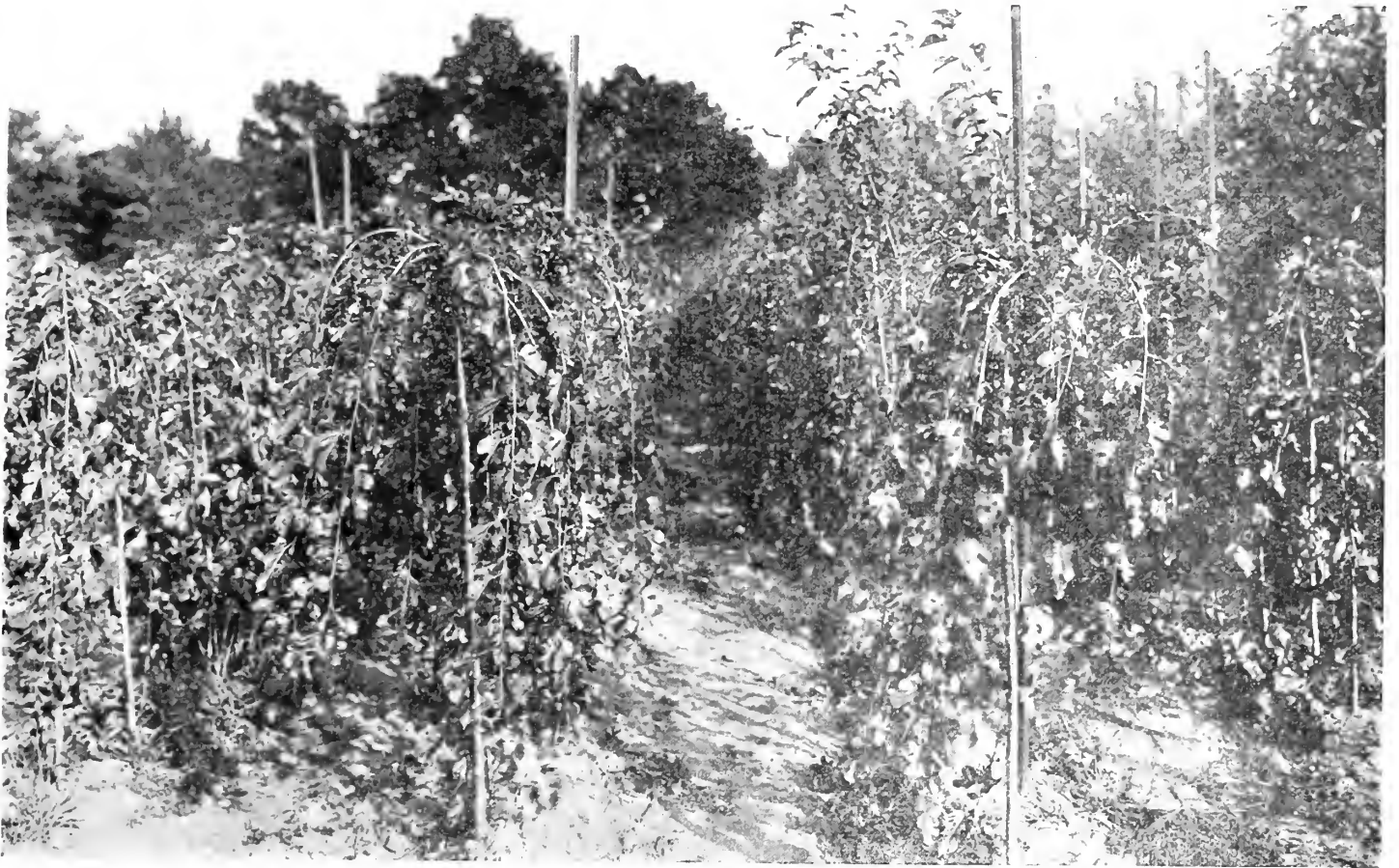


The Oriental Planes Offered Below

Deciduous, Ornamental and Shade Trees

All our trees are young, clean and thrifty. The caliper is taken *six inches above the crown*. Height and caliper do not describe the quality nor determine the value of a tree; there is something more important, which cannot be measured in general terms, but which requires actual inspection. We therefore include photographs to supplement the indefinite specifications of feet and inches.

MAPLES:		Per 10	Per 100		Per 10	Per 100
Acer dasycarpum	8-10 ft., 1 in.	\$2.50	\$ 20.00	Amygdalis persica alba	3- 4 ft.	\$1.75 15.00
(Silver Maple)	8-10 ft., 1½ in.	3.50	30.00	(Double-flowering Peach)	4- 5 ft.	2.25 20.00
— — laciniata Weiri	10-11 ft., 1½ in.	4.50	40.00	— — rubra	3- 4 ft.	1.75 15.00
(Weir's Cut-leaved)	5- 6 ft.	2.75	25.00		4- 5 ft.	2.25 20.00
	6- 8 ft.	3.25	30.00			
	8-10 ft., 1 in.	4.50	40.00	BIRCHES:		
	8-10 ft., 1½ in.	5.50	50.00	Betula alba	4- 5 ft.	2.75 25.00
— platanoides	10-11 ft., 1½ in.	7.50	70.00	(European White Birch)	5- 6 ft.	3.25 30.00
(Norway Maple)	8-10 ft., 1 in.	4.50	40.00		6- 8 ft.	4.50 40.00
	8-10 ft., 1½ in.	5.50	50.00		8-10 ft., 1½ in.	6.00 55.00
	10-11 ft., 1½ in.	7.50	70.00		10-12 ft., 2 in.	8.50 75.00
	11-12 ft., 1½ in.	8.50	80.00	— — pendula	3- 4 ft.	2.75 25.00
	12-13 ft., 2 in.	11.00	100.00	(Cut-leaved Weeping Birch).	4- 5 ft.	3.25 30.00
	13-14 ft., 2½ in.	15.00	125.00	These trees are all branched to	5- 6 ft.	4.50 40.00
	13-14 ft., 2½ in.	20.00	175.00	the ground, as Birches should	6- 8 ft.	5.50 50.00
— — Schwedleri	8-10 ft., 1½ in.	10.00		be.	8-10 ft.	8.00 75.00
(Schwedler's Maple)	10-12 ft., 1½ in.	12.50				
	10-12 ft., 1½ in.	15.00		— — Youngi	4- 5 ft.	8.00
	12-13 ft., 2 in.	20.00		(Young's Weeping Birch)	4- 5 ft. Heavy	10.00
— pseudoplatanus	6- 8 ft.	3.00		— lutea	3- 4 ft.	2.00
(Sycamore Maple)	8-10 ft., 1 in.	5.00		(Yellow Birch)		
	8-10 ft., 1½ in.	7.00		— nigra	3- 4 ft.	2.00
	10-11 ft., 1½ in.	8.00		(Red Birch)		
— rubrum	6- 8 ft.	6.00		— papyrifera	4- 6 ft.	3.50 30.00
(Red or Scarlet Maple)	8-10 ft.	8.00		(Paper or Canoe Birch)	6- 8 ft.	5.50 50.00
— saccharum	10-11 ft., 1½ in.	7.00			8-10 ft.	7.00 65.00
(Sugar Maple)	11-13 ft., 1½ in.	9.00				



Our Teas' Weeping Mulberries



Our White Poplars

Shade Trees—Continued

Carpinus caroliniana	18-24 in.	1.75	15.00
(American Hornbeam)	2- 3 ft.	2.75	25.00
Cladrastris tinctoria	2- 3 ft.	3.00	
Yellow Wood (Virgilia lutea)			
Cornus florida	2- 3 ft.	2.25	20.00
(White Flowering Dogwood)	3- 4 ft.	3.25	30.00
	4- 5 ft.	4.50	40.00
— — rubra	18-24 in.	4.50	40.00
(Red Flowering Dogwood)	2- 3 ft.	6.50	60.00
	3- 4 ft.	8.50	80.00
	4- 5 ft.	11.00	100.00
	5- 6 ft.	16.00	150.00

THORNS:

Crataegus coccinea	18-24 in.	1.50	12.00
(White Thorn)	2- 3 ft.	1.75	15.00
	3- 4 ft.	2.50	20.00
— cordata	4- 6 ft.	4.00	
(Washington Thorn)	6- 8 ft.	5.00	
— crus-galli	2- 3 ft.	2.25	20.00
(Cockspur Thorn)	3- 4 ft.	2.75	25.00
	4- 6 ft.	3.75	35.00
	6- 8 ft.	5.50	50.00
— Oxycantha flore pleno	3- 4 ft.	3.00	25.00
Double Pink, Red, White and Paul's Scarlet.	4- 5 ft.	4.00	35.00
Cytissus laburnum	2- 3 ft.	2.00	
(Golden Chain)	3- 4 ft.	3.00	
	4- 5 ft.	4.00	
	5- 6 ft.	5.00	

BEECHES:

Fagus sylvatica	2- 3 ft.	3.00	
(Common English Beech)	3- 4 ft.	4.00	
	4- 5 ft.	5.00	
— — pendula	2- 3 ft.	7.50	
(Weeping Beech)	3- 4 ft.	10.00	
— — purpurea	2- 3 ft.	4.00	
(Purple, or Copper Beech)	3- 4 ft.	5.00	
	4- 5 ft.	6.00	
Larix europaea	4- 5 ft.	4.00	
(European Larch)	5- 6 ft.	5.00	
— leptolepis	4- 5 ft.	5.00	
(L. Kaempferi or Japanese Larch)	5- 6 ft.	6.00	
Liriodendron tulipifera	4- 5 ft.	3.00	
(Tulip Tree)	5- 6 ft.	4.00	
	6- 8 ft.	5.00	
Magnolia acuminata	2- 3 ft.	3.00	
(Cucumber Tree)	3- 4 ft.	4.00	
	4- 5 ft.	5.00	
— tripetala	2- 3 ft.	3.00	
(Umbrella Tree)	3- 4 ft.	4.00	
	4- 5 ft.	5.00	
	3- 4 ft.	3.00	

FLOWERING CRABS:

Malus coronarius	4- 5 ft.	4.00	
Single; pink; fragrant			
— floribunda	3- 4 ft.	2.50	
Single; pink, changing to white	4- 5 ft.	3.00	
— ioensis	18-24 in.	2.50	
(Bechtel's Double-flowering Crabs)	2- 3 ft.	3.00	
	3- 4 ft.	4.00	
	4- 5 ft.	5.00	
— Packmani	2- 3 ft.	3.00	
	3- 4 ft.	4.00	
— spectabilis	2- 3 ft.	3.00	
Double; white	3- 4 ft.	4.00	
	4- 5 ft.	5.00	
— Scheideckeri	3- 4 ft.	4.00	
Double; pink			
Morus pendula	Light	6.00	
(Teas' Weeping Mulberry)	Medium	7.50	
Two Year Heads	Heavy	10.00	
Mostly double-budded	Very Heavy	12.50	
Pawlonia imperialis	6- 8 ft.	6.00	
(Empress Tree)	8-10 ft.	8.00	
	10-12 ft.	10.00	
Platanus orientalis	8-10 ft., 1 in.	25.00	
(European Planes)	8-10 ft., 1 1/4 in.	35.00	
Straight transplanted, pruned and shaped into as fine a block as we have ever seen.	10-11 ft., 1 1/2 in.	50.00	
	11-12 ft., 1 3/4 in.	100.00	
	12-14 ft., 2 in.	125.00	



Some of Our Young Norway Maples

POPLARS:

Populus alba	8-10 ft., 1 in.	20.00
White or Silver Poplar	8-10 ft., 1 1/4 in.	25.00
	10-12 ft., 1 1/2 in.	35.00
— — canescens	8-10 ft., 1 in.	20.00
	8-10 ft., 1 1/4 in.	25.00
	10-12 ft., 1 1/2 in.	35.00
— balsamifera	8-10 ft., 1 1/4 in.	2.50
(Balsam Poplar)	8-10 ft., 1 1/2 in.	4.00
	10-12 ft., 1 3/4 in.	5.00
— fastigiata or p. nigra italica	6- 8 ft.	15.00
(Lombardy Poplar)	8-10 ft., 1 in.	20.00
Transplanted; properly pruned; well-furnished; branched to the ground.	10-12 ft., 1 1/4 in.	30.00
	11-13 ft., 1 1/2 in.	40.00
	12-14 ft., 1 3/4 in.	50.00
	13-15 ft., 2 in.	65.00
	14-16 ft., 2 1/4 in.	80.00
	14-16 ft., 2 1/2 in.	100.00
— monilifera	8-10 ft.	12.00
(Carolina Poplar)	8-10 ft., 1 1/4 in.	15.00
	10-12 ft., 1 1/2 in.	25.00
	12-14 ft., 1 3/4 in.	35.00
— Norway	13-15 ft., 2 in.	50.00
(Sudden Saw Log.)	14-16 ft., 2 1/4 in.	60.00
	14-16 ft., 2 1/2 in.	80.00
— suaveolens	8-10 ft., 1 1/4 in.	3.00
(Properly P. Maximowiczii)	8-10 ft., 1 1/2 in.	4.00

OAKS:

Quercus coccinea	4- 6 ft.	6.00
(Scarlet Oak)	6- 8 ft.	10.00
	8-10 ft.	12.50
— palustris	4- 6 ft.	6.00
(Pin Oak)	6- 7 ft.	8.00
	7- 8 ft.	9.00
	8-10 ft.	12.50
— rubra	4- 6 ft.	6.00
(Red Oak)	6- 7 ft.	8.00
	7- 8 ft.	10.00
Robinia pseudacacia	3- 4 ft.	12.00
(Black or Yellow Locust)	4- 5 ft.	15.00
Salisburia adiantifolia	3- 4 ft.	20.00
(Ginkgo, or Maiden-Hair Tree)	4- 6 ft.	25.00
	6- 8 ft.	35.00

Shade Trees—Continued

		Per 10	Per 100			Per 10	Per 100
WILLOWS:							
Salix babylonica	6- 8 ft.		\$25.00	— — britzensis	2- 3 ft.	\$1.00	
(Weeping Willow)	8-10 ft.		35.00		3- 4 ft.	1.20	
	10-12 ft.		50.00		1- 6 ft.	1.50	
	12-14 ft.		75.00	— — pendula	6- 8 ft.	2.50	
— — Salamoni	6- 8 ft.	\$2.00		Sorbus aucuparia	7- 8 ft.	4.00	
	10-12 ft.	4.00		(European Mountain Ash)	8- 9 ft.	4.50	
	12-14 ft.	6.00			9-10 ft.	5.00	
— caprea	3- 4 ft.	1.50			10-12 ft.	6.00	
(Pussy Willow)	4- 5 ft.	2.00		Tilia americana	8- 9 ft., 1 $\frac{1}{4}$ in.	6.00	
— elegantissima	6- 8 ft.	2.50		(American Linden)	9-10 ft., 1 $\frac{1}{2}$ in.	7.50	
(Thurlow's Weeping Willow)	8-10 ft.	3.50			10-11 ft., 1 $\frac{3}{4}$ in.	8.00	
	10-12 ft.	4.50		— tomentosa or argentea	6- 8 ft.	6.00	
	12-14 ft.	6.00		(European Silver-leaved	8- 9 ft., 1 $\frac{1}{4}$ in.	7.50	
— pentandra	4- 6 ft.		15.00	Linden)	8-10 ft., 1 $\frac{1}{2}$ in.	10.00	
(Laurel-leaved Willow)	6- 8 ft.		20.00	— vulgaris	6- 8 ft.	4.00	
	8- 9 ft.		25.00	(European Small-leaved	8-10 ft.	6.00	
	9-10 ft.		30.00	Linden)			
— rosmarinifolia							
(Look under Shrubs)							
— vitellina aurea	2- 3 ft.	1.50					
(Golden Bark Willow)	3- 4 $\frac{1}{2}$ ft.	2.00					
	4- 6 ft.	2.50					
	6- 8 ft.	3.00					
	8-10 ft.	4.00					

Deciduous Shrubs

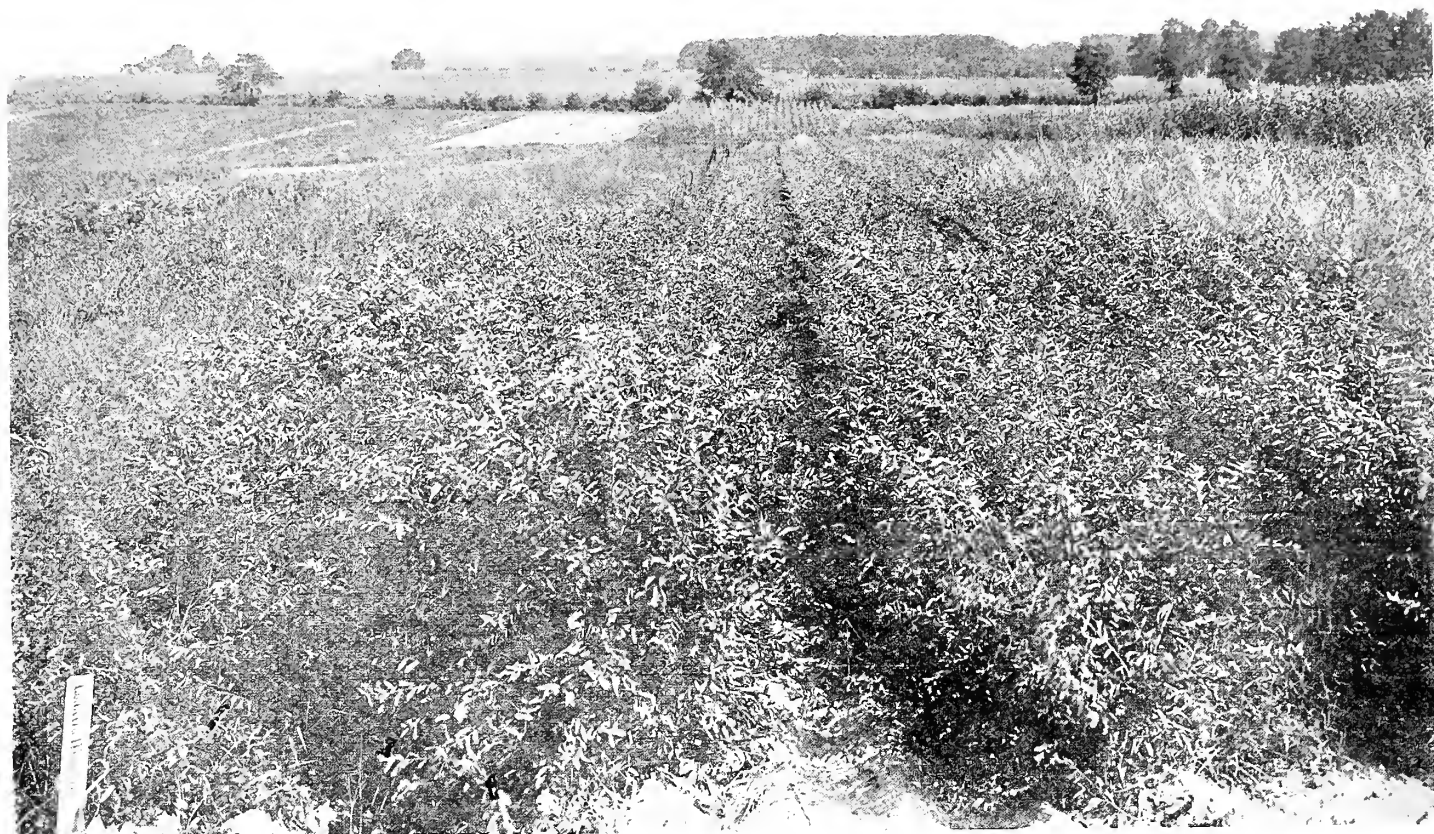
		Per 10	Per 100
Amorpha canescens	18-24 in.		\$ 15.00
— fruticosa	2- 3 ft.		12.00
Amygdalus communis	18-24 in.		12.00
(Flowering Almonds, Pink			
and white)	2- 3 ft.		15.00
Andromeda arborea	2- 3 ft.	\$3.50	
(oxydendron)	3- 4 ft.	5.00	
Aralia pentaphylla	2- 3 ft.		10.00
Acanthopanax.....	3- 4 ft.		12.00
	4- 5 ft.		15.00
— spinosa	2- 3 ft.		15.00
(Hercules Club)	3- 4 ft.		20.00
	4- 5 ft.		25.00
Aronia arbutifolia nigra	2- 3 ft.		15.00
(Black Chokeberry)	3- 4 ft.		20.00
— — rubra	2- 3 ft.		20.00
(Red Chokeberry)	3- 4 ft.		25.00
Azalea Arborescens	8-10 in.	1.50	
(Fragrant Pink Azalea)	10-12 in.	2.50	
	12-15 in.	3.50	
— nudiflora	8-10 in.	1.50	
(Pink)	10-12 in.	2.50	
	12-15 in.	3.50	
		Per 1000	
Berberis Thunbergii	12-18 in.	\$50.00	5.00
(Thunberg's Japanese	18-24 in.	70.00	8.00
Barberry)	24-30 in.	100.00	12.00
	30-36 in.	135.00	15.00
— vulgaris	18-24 in.		10.00
(Common upright green-	2- 3 ft.		12.00
leaved barberry)			



Two Year Spiraeas



Some of our Lilacs



Our Bush Honeysuckles



Our Weigelas



Our Two Year Deutzias

Deciduous Shrubs--Continued

	Per 10	Per 100		Per 10	Per 100
Buddleia Davidii Veitchiana	18-24 in.	\$ 8.00	Desmodium penduliflorum	18-24 in.	\$12.00
(Butter-fly Bush) Large-	2- 3 ft.	10.00		2- 3 ft.	15.00
flowered, sweet-scented	3- 4 ft.	12.00	Deutzia candidissima	2- 3 ft.	8.00
Calycanthus floridus	18-24 in.	10.00	Double white	3- 4 ft.	10.00
(Sweet Shrub)	2- 3 ft.	12.00		4- 5 ft.	12.00
	3- 4 ft.	15.00	— crenata	2- 3 ft.	8.00
Ceanothus americanus	12-18 in.	\$1.20		3- 4 ft.	10.00
(New Jersey Tea, or Red Root)	18-24 in.	1.50		4- 5 ft.	12.00
Cephalanthus occidentalis	18-24 in.	1.00	— gracilis	12-15 in.	6.00
(Button Bush)	2- 3 ft.	1.20		15-18 in.	8.00
Celtis occidentalis	18-24 in.	1.00		18-24 in.	10.00
(Hackberry, or Nettle Tree)	2- 3 ft.	1.50		24-30 in.	15.00
Cercis canadensis	2- 3 ft.		— Lemoinei	18-24 in.	10.00
(American Judas Tree)	3- 4 ft.	15.00		2- 3 ft.	15.00
	4- 5 ft.	20.00	— Pride of Rochester	2- 3 ft.	8.00
	5- 6 ft.	25.00		3- 4 ft.	10.00
Clethra alnifolia	18-24 in.	12.00		4- 5 ft.	12.00
(Sweet Pepper Bush)	2- 3 ft.	15.00	Eleagnus angustifolia	2- 3 ft.	12.00
Cornus alba	2- 3 ft.	10.00	(Russian Olive)	3- 4 ft.	15.00
(Red-barked Dogwood)	3- 4 ft.	12.00		4- 5 ft.	18.00
— — Siberica	2- 3 ft.	10.00	Euonymus alatus	18-24 in.	15.00
	3- 4 ft.	12.00	(Cork-barked Euonymus)	24-30 in.	25.00
— — elegantissima variegata	18-24 in.	15.00		30-36 in.	30.00
(White-variegated-leaved)	2- 3 ft.	20.00	Exochorda grandiflora	2- 3 ft.	15.00
— — Spaethii aurea	18-24 in.	15.00	(Pearl Bush)		
(Yellow-variegated-leaved)	2- 3 ft.	20.00	Forsythia Fortunei	2- 3 ft.	8.00
— paniculata	18-24 in.	12.00	(Golden Bell)	3- 4 ft.	10.00
(Paniced Gray Dogwood)	2- 3 ft.	15.00		4- 5 ft.	15.00
— sericera	2- 3 ft.	10.00	— intermedia	2- 3 ft.	8.00
(Silky Dogwood)	3- 4 ft.	12.00		3- 4 ft.	10.00
	4- 5 ft.	15.00		4- 5 ft.	15.00
— stolonifera lutea	2- 3 ft.	12.00	— suspensa	2- 3 ft.	10.00
(Yellow-barked)	3- 4 ft.	15.00	(True drooping variety)	3- 4 ft.	12.00
Corylus Avellana	2- 3 ft.	1.50		4- 5 ft.	15.00
(English Filbert)	3- 4 ft.	2.00	— viridissima	2- 3 ft.	10.00
	4- 5 ft.	2.50		3- 4 ft.	12.00
Cydonia Japonica	18-24 in.	10.00		4- 5 ft.	15.00
(Japan Quince)	2- 3 ft.	12.00	Genista scoparia	12-18 in.	10.00
Scarlet-flowered	3- 4 ft.	15.00	(Scotch Broom)	18-24 in.	15.00
				2- 3 ft.	20.00
			— tinctoria	12-15 in.	15.00
				15-18 in.	18.00



Our Symphoricarpos



Some very good Spiraea Anthony Watereri; this block, two years in the nursery, will run 90% in plants 2 to 2½ ft. high and average 12 to 16 branches.

Deciduous Shrubs—Continued

	Per 10	Per 100		Per 10	Per 100
Halesia tetraptera18-24 in. (Silver Bell)	\$2.00		— Lonicera Standishii 2- 3 ft. (White; fragrant; very early)		\$12.00
Hamamelis virginiana 2- 3 ft. (Witch Hazel)	2.00		— tatarica alba 2- 3 ft. (White Tartarian Honey-		10.00
Hibiscus syriacus 2- 3 ft. (Althea, or Rose of Sharon.		\$10.00	suckle)		12.00
Double; Pink, Red, White,		12.00	— — rubra 2- 3 ft.		15.00
Purple.)		15.00	3- 4 ft.		12.00
— — Variegated Leaved 2- 3 ft.		15.00	4- 5 ft.		15.00
3- 4 ft.		20.00	Myrica cerifera 12-15 in.		15.00
Hydrangea arborescens sterilis 18-24 in.		8.00	(Northern Bayberry)		17.50
Grandiflora alba or Hills of		10.00	15-18 in.		20.00
Snow,		12.00	18-24 in.		25.00
— paniculata 18-24 in.		10.00	2- 3 ft.		
(The type; single)		12.00	Paeonia Moutan 5 years	\$5.00	
— — grandiflora 18-24 in.		9.00	(Japanese Tree Peonies)		
(The familiar large-panicked		12.00	Philadelphus Avalanche 2- 3 ft.		12.00
late-flowering hydrangea.)		15.00	3- 4 ft.		15.00
— — — Standard, or Tree Form.		20.00	— coronarius 2- 3 ft.		10.00
Straight, heavy stems; strong		25.00	(Mock Orange)		12.00
heads		30.00	or Garland Syringa		15.00
— radiata, or nivea 2- 3 ft.	1.50		— — foliis aureis 12-15 in.		12.00
3- 4 ft.	2.00		(Golden Syringa)		15.00
— hortensis 2 and 3 years..... Large Clumps	3.50		15-18 in.		20.00
One year,		1.50	18-24 in.		8.00
— Otaksa , 2 years; field-grown..... Large Clumps	3.50		2- 3 ft.		10.00
One year; open ground	1.50		3- 4 ft.		12.00
Hypericum aureum 18-24 in.		10.00	4- 5 ft.		12.00
(St. John's Wort)		12.00	Potentilla fruticosa 12-18 in.		12.00
— densiflorum 18-24 in.		10.00	18-24 in.		15.00
2- 3 ft.		12.00	Prunus maritima 2- 3 ft.	2.50	
Hex verticillata 18-24 in.		15.00	3- 4 ft.	3.00	
(Black Alder)		20.00	— triloba 2- 3 ft.		18.00
Itea virginica 18-24 in.		12.00	(Double-flowering Plum)		
Jasminum nudiflorum 18-24 in.		10.00	— Pissardii 2- 3 ft.		10.00
2- 3 ft.		15.00	(Purple-leaved Plum)		12.00
Kerria japonica 18-24 in.		10.00	3- 4 ft.		15.00
(Single)		12.00	4- 5 ft.		25.00
— — flore pleno 18-24 in.		10.00	5- 6 ft.		8.00
2- 3 ft.		12.00	Rhamnus carthartica 2- 3 ft.		10.00
— — variegata 12-15 in.		12.00	(Common Buckthorn)		12.00
15-18 in.		15.00	3- 4 ft.		10.00
Laurus Benzoin 18-24 in.	2.00		4- 5 ft.		12.00
(Spice Bush)			— frangula 2- 3 ft.		10.00
Lespedeza bicolor 18-24 in.		12.00	3- 4 ft.		12.00
2- 3 ft.		15.00	Rhodotypos Kerrioides 2- 3 ft.		10.00
PRIVETS:			(White Kerria)		12.00
Ligustrum amurense 18-24 in.		5.00	4- 5 ft.		15.00
(Amur River Privet)		6.00	Rhus aromatica 12-18 in.		12.00
— ciliatum 18-24 in.		9.00	(Fragrant Sumac)		15.00
2- 3 ft.		10.00	18-24 in.		20.00
— lbota 18-24 in.		12.00	2- 3 ft.		1.50
2- 3 ft.		4.00	— copallina 18-24 in.	2.00	
3- 4 ft.		6.00	(Dwarf, shining sumac)		2.00
4- 5 ft.		8.00	— cotinus 2- 3 ft.		15.00
— — Regelianum 18-24 in.		12.00	(Purple Fringe)		20.00
(From cuttings—not seedlings; 24-30 in.		4.00	3- 4 ft.		25.00
perfectly uniform type, without		6.00	4- 5 ft.		12.00
the slightest variation.)		8.00	— glabra 2- 3 ft.		15.00
36-48 in.		10.00	(Smooth sumac)		20.00
Per 1000		12.00	4- 5 ft.		15.00
— ovalifolium 12-18 in.	\$12.00	1.50	— typhina laciniata 2- 3 ft.		20.00
(California Privet)		2.00	(Cut-leaved Staghorn Sumac)		15.00
2- 3 ft.		25.00	3- 4 ft.		20.00
3- 4 ft.		30.00	Ribes aureum 18-24 in.		6.00
4- 5 ft.		50.00	(Yellow-flowering Currant)		8.00
Per 10		8.00	2- 3 ft.		10.00
— — aureum 12-15 in.	1.50		3- 4 ft.		10.00
(Variegated-leaved)			4- 5 ft.		15.00
— vulgare 18-24 in.		6.00	— sanguineum 12-15 in.	.80	
(English Privet)		8.00	(Red-flowering Currant)	1.00	
3- 4 ft.		12.00	15-18 in.		
BUSH HONEYSUCKLES.			Robinia hispida 18-24 in.		15.00
Lonicera Alberti 12-15 in.		12.00	(Rose Acaecia)		20.00
15-18 in.		15.00	Rosa. See Rose Department.		
— fragrantissima 18-24 in.		8.00	Rubus odoratus 2- 3 ft.		10.00
(Fragrant Upright Honey-		10.00	(Flowering Raspberry)		
suckle)		12.00	Salix rosmarinifolia 2- 3 ft.		12.00
3- 4 ft.		15.00	(Rosemary-leaved Willow)		15.00
4- 5 ft.		8.00	3- 4 ft.		18.00
— Morrowii 2- 3 ft.		10.00	4- 5 ft.		18.00
(White blooms; red berries;		12.00	Sambucus Canadensis 2- 3 ft.		10.00
spreading habit)		15.00	(Common American Elder)		12.00
— Ruprechtiana 2- 3 ft.		10.00	3- 4 ft.		8.00
(Abundant showy red berries)		12.00	— — nigra aurea 2- 3 ft.		10.00
3- 4 ft.		15.00	(Golden Elder)		12.00
4- 5 ft.			3- 4 ft.		10.00
			4- 5 ft.		12.00
			— nigra laciniata 2- 3 ft.	2.00	
			Spiraea arguta 12-15 in.		.80
			12-15 in.		1.00
			15-18 in.		1.20
			18-24 in.		
			2- 3 ft.		8.00
			3- 4 ft.		10.00
			— Billardii 2- 3 ft.		10.00
			3- 4 ft.		10.00
			— Bumalda 18-24 in.		12.00
			24-30 in.		12.00



Our Spirea Thunbergii: Two Years



Our Regel's Privet: from cuttings, and a single type, to secure absolute uniformity.

Deciduous Shrubs—Continued

	Per 10	Per 100		Per 10	Per 100
— Anthony Waterer			— molle		
18-24 in.		\$12.00	18-24 in.		\$10.00
24-30 in.		15.00	2- 3 ft.		12.00
— callosa alba		15.00	3- 4 ft.		15.00
18-24 in.		20.00	— dilatatum		\$2.00
24-30 in.		10.00	18-24 in.		2.50
— opulifolia		12.00	2- 3 ft.		
(Ninebark)		15.00	— lantana		12.00
2- 3 ft.		10.00	(Wayfaring Tree)		15.00
3- 4 ft.		15.00	2- 3 ft.		20.00
4- 5 ft.		12.00	3- 4 ft.		15.00
— aurea		10.00	4- 5 ft.		20.00
(Golden Ninebark)		12.00	— lentago		15.00
2- 3 ft.		15.00	(Sheepberry)		20.00
3- 4 ft.		12.00	2- 3 ft.		10.00
4- 5 ft.		20.00	3- 4 ft.		12.00
— prunifolia flore pleno		12.00	4- 5 ft.		18.00
(Bridal Wreath of the North)		15.00	— opulus		10.00
18-24 in.		20.00	(High, or Bush Cranberry)		12.00
2- 3 ft.		12.00	3- 4 ft.		15.00
3- 4 ft.		15.00	4- 5 ft.		18.00
— Reevesiana flore pleno		12.00	— sterile		12.00
2- 3 ft.		15.00	(Common Snowball)		15.00
3- 4 ft.		10.00	2- 3 ft.		15.00
— Thunbergii		12.00	3- 4 ft.		18.00
18-24 in.		10.00	4- 5 ft.		20.00
24-30 in.		12.00	— prunifolium		25.00
24-30 in.		10.00	(Black Haw)		30.00
30-36 in.		8.00	18-24 in.		40.00
— Van Houttei		10.00	2- 3 ft.		
2- 3 ft.		15.00	3- 4 ft.		8.00
3- 4 ft.			4- 5 ft.		10.00
4- 5 ft.			— rhytidophyllum		
Staphylea colchica	\$2.50		12-15-in.		
(Bladder Nut)	3.50		15-18 in.		
2- 3 ft.		10.00	— Sieboldii		12.00
3- 4 ft.		12.00	(Foliage the largest and finest		15.00
Stephanandra flexuosa		10.00	of any of the Viburnums)		20.00
2- 3 ft.		12.00	3- 4 ft.		25.00
3- 4 ft.		10.00	4- 5 ft.		10.00
Symphoricarpos racemosus		12.00	— tomentosum		12.00
(Snowberry or Waxberry)		15.00	(Single)		18.00
2- 3 ft.		8.00	18-24 in.		25.00
3- 4 ft.		10.00	2- 3 ft.		15.00
4- 5 ft.			3- 4 ft.		18.00
— vulgaris			4- 5 ft.		25.00
(Indian Currant or Coral			— plicatum		15.00
Berry)			(Japanese Snowball)		18.00
LILACS:			2- 3 ft.		25.00
Syringa persica alba	2.00		3- 4 ft.		30.00
(White Persian Lilac)			4- 5 ft.		10.00
2- 3 ft.		15.00	Weigela amabilis		12.00
3- 4 ft.		20.00	2- 3 ft.		12.00
— rothomagensis		15.00	3- 4 ft.		15.00
(Rouen Lilac; red)		20.00	— Eva Rathke		10.00
2- 3 ft.		15.00	18-24 in.		15.00
3- 4 ft.		20.00	2- 3 ft.		20.00
— saugiana		8.00	3- 4 ft.		
2- 3 ft.		10.00	— Lavallei		1.00
3- 4 ft.		15.00	(Dark red)		1.50
4- 5 ft.		18.00	2- 3 ft.		2.00
— vulgaris		10.00	3- 4 ft.		
(Common Purple Lilac)		12.00	4- 5 ft.		10.00
2- 3 ft.		18.00	— lutea		12.00
3- 4 ft.		10.00	(Diervilla Sessilifolia, Yellow		15.00
4- 5 ft.		12.00	flowers)		
— alba		12.00	— rosea		8.00
(Common White Lilac)		15.00	18-24 in.		10.00
2- 3 ft.		20.00	2- 3 ft.		12.00
3- 4 ft.		25.00	3- 4 ft.		18.00
4- 5 ft.		12.00	4- 5 ft.		10.00
Tamarix africana		15.00	— variegata		10.00
(Tamarisk)		20.00	18-24 in.		12.00
2- 3 ft.		12.00	2- 3 ft.		15.00
3- 4 ft.		15.00	3- 4 ft.		
4- 5 ft.		10.00	— Xanthoceras sorbifolia		4.00
— Gallica		12.00	18-24 in.		5.00
2- 3 ft.		15.00	2- 3 ft.		
3- 4 ft.		20.00	3- 4 ft.		8.00
4- 5 ft.		25.00	— variegata		10.00
— hispidia aestivalis		12.00	18-24 in.		12.00
2- 3 ft.		15.00	2- 3 ft.		15.00
3- 4 ft.		20.00	3- 4 ft.		
4- 5 ft.		25.00	— Zanthorhiza apiifolia		8.00
Viburnum cassinoides		12.00	(Yellow Root)		10.00
18-24 in.		15.00	8-12 in.		
2- 3 ft.		20.00	12-15 in.		
3- 4 ft.		25.00			
4- 5 ft.		15.00			
— dentatum		20.00			
(Arrow-Wood)					
2- 3 ft.					
3- 4 ft.					
4- 5 ft.					

Deciduous Climbing Plants

	Per 10	Per 100		Per 10	Per 100
Actinidia arguta		\$12.00	Clematis paniculata		\$15.00
3- 3 ft.		15.00	XXX Heavy		12.00
3- 4 ft.		8.00	Two and Three years		8.00
Ampelopsis Engelmanni		10.00	Field-grown		15.00
2- 3 ft.		8.00	— Kudzu Vine		8.00
3- 4 ft.		10.00	Strong		
— quinquefolia		12.00	Lonicera Halleana		8.00
2- 3 ft.		10.00	(Hall's Japan Honeysuckle)		
3- 4 ft.		12.00	— Lycium barbarum		10.00
— tricuspidata Veitchii		10.00	(Matrimony Vine)		12.00
No. 1		7.50	— chinense		10.00
Two Years		15.00	2- 3 ft.		12.00
Field-grown		20.00	3- 4 ft.		12.00
No. 2		10.00	— Wisteria sinensis		12.00
Bignonia grandiflora		15.00	(Chinese Purple)		15.00
Grafted plants		20.00	2- 3 ft.		
— Celastrus scandens		10.00	3- 4 ft.		
18-24 in.		12.00			
2- 3 ft.		15.00			
3- 4 ft.					

Evergreen Shrubs or Broad-leaved Evergreens

		Per 10	Per 100			Per 10	Per 100
Andromeda Catesbaei	12-15 in.	4.00	\$30.00	Cotoneaster horizontalis	12-15 in.	4.25	40.00
(<i>Leucothoe Catesbaei</i>)	15-18 in.	5.00	40.00		15-18 in.	5.25	50.00
	18-24 in.	7.00	60.00	Crataegus Pyracantha			
— Japonica	8-12 in.	5.00	40.00	Lalandii	18-24 in.	3.25	30.00
(<i>Pieris Japonica</i>)	12-15 in.	7.50	60.00	(<i>Evergreen Thorn</i>)	2- 3 ft.	5.25	50.00
	15-18 in.	9.00	80.00	Euonymus japonicus	6- 8 in.	1.25	10.00
Azalea amoena	8-10 in.	4.00	35.00		8-10 in.	1.30	12.00
	10-12 in.	6.00	50.00		10-12 in.	1.60	15.00
	12-15 in.	9.00	75.00		12-18 in.	2.50	20.00
— Hinodigiri	8-12 in.	6.00	50.00		18-24 in.	3.50	30.00
	12-15 in.	10.00	85.00	— — variegatus argenteus	8-10 in.	2.50	20.00
	15-18 in.	12.50	100.00	— radicans	8-12 in.	.90	8.00
— Kaempferi	6- 8 in.	4.00		(<i>Climbing Euonymus, two</i>	12-18 in.	1.25	10.00
	8-12 in.	6.00		years, bushy.)	18-24 in.	1.50	12.00
	12-15 in.	7.50			8-12 in.	1.00	9.00
	15-18 in.	9.00		— — Carrieri	12-18 in.	1.30	12.00
	18-24 in.	12.50		(<i>Leaves larger than Radicans</i>)	18-24 in.	1.75	15.00
— Yodogawa	12-15 in.	5.00		— — vegetus	6- 8 in.	1.00	9.00
	15-18 in.	7.50		(<i>Best Climbing Euonymus</i>)	8-10 in.	1.30	12.00
	18-24 in.	10.00		— Sieboldiana	12-18 in.	1.30	12.00
Berberis ilicifolia	18-24 in.	2.50	20.00		18-24 in.	1.60	15.00
(<i>Holly-leaved Barberry</i>)	24-30 in.	3.00	25.00	Ilex crenata microphylla	8-12 in.	5.00	
BOXWOODS:				(<i>Small-leaved Japanese Holly</i>)	12-15 in.	7.50	
Buxus arborescens	8-10 in.	2.50	20.00	Kalmia latifolia	18-24 in.	7.00	60.00
(<i>Common Boxwood</i>)	10-12 in.	3.50	30.00	(<i>Mountain Laurel</i>), Nursery-			
A hardy, home-propagated	12-15 in.	5.00	40.00	grown.			
type; not imported.	15-18 in.	6.00	50.00	Mahonia aquifolia	12-18 in.	2.25	20.00
	18-24 in.	9.00	75.00	(<i>Holly-leaved Mahonia</i>)	18-24 in.	2.75	25.00
— sempervirens angustifolia	12-15 in.	5.00	40.00		2- 3 ft.	3.50	30.00
(<i>deep green leaves</i>)	15-18 in.	6.00	50.00	Osmanthus aquifolium	12-18 in.	2.75	25.00
— suffruticosa	3- 4 in.		4.50	(<i>Holly-leaved Tea Olive</i>)	18-24 in.	3.75	35.00
(<i>Dwarf edging boxwood</i>)	4- 5 in.		5.50				
	5- 6 in.		8.00				
	6- 7 in.		12.00				



Our American Arbor Vitae: Shapely sheared specimens, and like all our Conifers, transplanted every other year.



A block of our Conifers. The water in the distance is Carnegie Lake, bounding our farm on one side.

Coniferous Evergreens

See also Broad-leaved Evergreen Shrubs and Vines

In this class of plants particularly, ordinary descriptions mean nothing at all; to say that a Conifer is "three feet" is to convey no idea of what it is in quality or value. We follow the usual method of grading by height or spread, realizing how inadequate that is to convey any idea of what the plants are. When the habit of a variety requires it, they are *sheared*, as stated below. *All* our Conifers are *transplanted every other year*. *All* Conifers will be "Balled and Burlapped" and prices as quoted include that, so buyers can know the *exact* cost; there are no extras.

	Per 10	Per 100		Per 10	Per 100
Abies: See <i>Picea</i> and <i>Tsuga</i> .					
Biota: See <i>Thuja</i> .					
Cedrus atlantica glauca 2- 3 ft.		\$12.50	— pyramidalis 2- 3 ft.	\$6.00	
		15.00		7.50	
				10.00	
Juniperus communis 18-24 in.	4.50		Juniperus chinensis Japonica 8-10 in.	2.50	
— — depressa 18-24 in.	5.00		(Japan Juniper)	4.00	
(<i>J. Canadensis</i>) 2- 3 ft.	7.50		— — globosa 12-15 in.	7.50	
— — prostrata 10-15 in.	2.50		— — Pfitzeriana 10-12 in.	4.00	
	3.50		(<i>Pfitzer's Juniper</i>) 24-30 in.	12.50	
— — aurea 8-10 in.	2.00		— — Sabina 8-10 in.	1.00	
(<i>Douglas' Golden Juniper</i>) 10-12 in.	2.50		(<i>Savin Juniper</i>) 18-24 in.	7.50	
	3.50			10.00	
— — hibernica 18-24 in.	2.25	\$20.00	— — tamariscifolia 8-10 in.	4.00	
(<i>Irish Juniper</i>) 24-30 in.	2.75	25.00	— Virginiana 3- 4 ft.	9.00	
	4.50	40.00	(<i>Red Cedar</i>) 4- 5 ft.	15.00	
— — communis suecica 12-18 in.	3.00	60.00	<i>Sheared plants</i> 6- 7 ft.	35.00	
(<i>Swedish Juniper</i>) 18-24 in.	4.00		— — glauca 20-24 in.	7.50	
— — excelsa stricta 12-18 in.	4.50		(<i>Blue Cedar</i>) 24-30 in.	10.00	
	7.50		<i>Sheared plants.</i> 4- 5 ft.	25.00	
	10.00		— — Waukegan 5- 6 ft.	10.00	
				3.00	
				4.00	

Coniferous Evergreens—Continued

		Per 10
Pinus Cembra	18-24 in.	\$10.00
(Swiss Stone Pine)	24-30 in.	12.50
— excelsa	2- 3 ft.	6.50
	3- 4 ft.	10.00
— Montana Mughus	24-30 in.	17.50
	30-36 in.	25.00
— Nigra austriaca	18-24 in.	6.00
(Austrian Pine)	24-30 in.	7.00
— Strobus	12-18 in.	2.00
(White Pine)	18-24 in.	3.00
Pinus sylvestris	15-18 in.	2.00
(Scotch Pine)	18-24 in.	2.50
	2- 3 ft.	4.00
	3- 4 ft.	6.50
Retinispora obtusa compacta ...	8-10 in.	2.50
	15-18 in.	3.50
	18-24 in.	5.00
— pisifera aurea	8-10 in.	2.50
	10-12 in.	3.50
	18-24 in.	6.00
Sheared plants	24-30 in.	7.50
	30-36 in.	10.00
— — plumosa	8-12 in.	2.50
	12-15 in.	3.50
	18-24 in.	5.00
	24-30 in.	7.50
Sheared plants.	30-36 in.	9.00
	3- 4 ft.	15.00
	5- 6 ft.	27.50
— — — aurea	8-10 in.	2.50
	10-12 in.	3.50
	12-15 in.	4.00
	18-24 in.	5.00
Sheared plants	24-30 in.	7.50
	30-36 in.	10.00
	5- 6 ft.	27.50
— — — filifera	18-24 in.	6.00
Sheared plants.	24-30 in.	9.00
	30-36 in.	12.50
	3- 4 ft.	15.00
— — — — aurea	8-12 in.	6.00
	12-15 in.	7.50
— — — lutescens	12-15 in.	5.00
	15-18 in.	6.00
— squarrosa	18-24 in.	6.00
	24-30 in.	7.50
	30-36 in.	10.00
	36-40 in.	12.50
	40-48 in.	15.00
Sciadopitys verticillata	18-24 in.	20.00
(Japanese Umbrella Pine)	24-30 in.	22.50
	30-36 in.	27.50
	36-40 in.	35.00
Taxus cuspidata brevifolia	6- 8 in.	4.00
(Japanese Yews)	8-10 in.	5.00
	10-12 in.	6.00
	12-15 in.	7.50
— — capitata	10-12 in.	6.50
	12-15 in.	8.50
	15-18 in.	10.00
	18-24 in.	15.00
Thuja occidentalis	24-30 in.	4.00
(American Arbor vitae)	30-36 in.	5.00
Sheared plants.	3- 4 ft.	6.00
	4- 5 ft.	10.00
— — aurea lutea	18-24 in.	5.00
(George Peabody)	24-30 in.	7.50
	30-36 in.	10.00
— — compacta	8-12 in.	2.50
(Parsons')	12-18 in.	4.00
	18-24 in.	6.00
Tsuga canadensis	18-24 in.	4.50
(Hemlock)	24-30 in.	7.50
	30-36 in.	10.00
Picea alba	18-24 in.	3.50
(White Spruce)	2- 3 ft.	5.00
— excelsa	18-24 in.	2.50
(Norway Spruce)	24-30 in.	4.00
	30-36 in.	5.00
— orientalis	12-18 in.	4.00
(Oriental Spruce)	18-24 in.	5.00
— pungens Kosteri	18-24 in.	10.00
(Koster's Blue Spruce)	24-30 in.	15.00
Grafted Plants.	30-36 in.	20.00



These young Conifers, having stood here for two years, have just been transplanted to improve the root system, to put them farther apart in the rows and to give them room and opportunity for growth and development. All our Conifers are moved every two years and all are dug with a ball of earth and sewn in burlap, for shipment. All Conifers should be.

And this cost of balling and burlapping is included in the prices named in this list; our prices cover not only the cost of stock properly grown but also stock handled properly and in a way to insure successful transplanting.

A Few Hardy Perennial Plants

	Per 100
Iris cyanea	\$ 6.00
Dwarf Iris; blue	
— germanica	6.00
(Named varieties)	
— Kaempferi	8.00
(Japanese Iris; named varieties)	
— Sibirica	6.00
Pachysandra terminalis , Two Years; field plants	10.00
Evergreen vine; the best ground-cover for shaded places.	
Peonies , Strong divisions with three to five Eyes.	
officinalis rubra	12.00
Pink: Edulis Superba	15.00
Modeste , (Guerin).....	20.00
Red: Anemone flora	12.00
Delachei	12.00
MacMahon	15.00
Purpurea Superba	12.00
Rubra triumphans	12.00

	Per 100
White: Duchesse de Nemours	\$20.00
Duke of Wellington	20.00
Festiva alba	18.00
Festiva maxima	20.00
Lady Dartmouth	18.00
Phlox , strong field plants, two years in the open ground.	
Pink-eye: Richard Wallace	6.00
Pink: General van Heutz	6.00
Thebaide	6.00
La Vague	6.00
Red: Coquelicot	6.00
Eclaircur	6.00
Matador	6.00
Madame Langier	6.00
Reichsgraf von Hochberg	6.00
White: Independence	6.00
Yucca filamentosa	10.00

Below, some young Conifers, standing here two years, recently transplanted.



Roses

SPECIES: Used almost altogether as shrubs in landscape work; they are all handsome as to bloom and foliage and their effectiveness in mass planting is bringing them into increased use.

		Per 100
Rosa Blanda	12-18 in.	\$ 8.00
	18-24 in.	10.00
— carolina	12-18 in.	8.00
	18-24 in.	10.00
	24-30 in.	12.00
	30-36 in.	15.00
— humilis	12-18 in.	10.00
	18-24 in.	12.00
— multiflora	2- 3 ft.	10.00
	3- 4 ft.	12.00
	4- 5 ft.	15.00
— nitida	12-18 in.	10.00
	18-24 in.	12.00
	24-30 in.	15.00
— rubiginosa	2- 3 ft.	10.00
— rubrifolia	18-24 in.	10.00
	24-30 in.	15.00
— setigera	2- 3 ft.	10.00
	3- 4 ft.	12.00
— rugosa	18-24 in.	8.00
	2- 3 ft.	10.00
	3- 4 ft.	12.00
— — alba	18-24 in.	10.00
	2- 3 ft.	12.00
— Wichuriana	2- 3 ft.	8.00
	3- 4 ft.	10.00
	4- 5 ft.	12.00

CLIMBING ROSES:

	Per 100
American Pillar	\$ 15.00
Crimson Rambler	10.00
Dr. Van Fleet	15.00
Dorothy Perkins	8.00
Silver Moon	5.00

HYBRID PERPETUALS:

	Per 100
Baron de Bonstettin	\$20.00
Clio	20.00
Conrad Ferdinand Meyer	20.00
Gen. Jack	20.00
M. P. Wilder	20.00
Magna Charta	20.00
Mrs. John Laing	20.00
Paul Neyron	20.00
Prince Camille de Rohan	20.00
Ulrich Brunner	20.00
Victor Verdier	20.00

HYBRID TEA AND MONTHLY-BLOOMING ROSES:

	Per 100
Frau Karl Druschki	\$25.00
Gruss an Teplitz	25.00
Killarney, Pink	25.00
Killarney, White	25.00
Mrs. Charles Russell	25.00
Ophelia	25.00



Our Standard Apples

QUINCES:		
Special 3/4 in. to 1 in., 4-6 ft.	\$4.00
Extra 3/8 in. to 3/4 in., 3-5 ft.	2.50
No. 1 7/16 in., 3-4 ft.	2.00
Medium 1/2 in., 2 1/2-3 ft.	1.50
✓ Bourgeat	✓ Champion	✓ Meech
		✓ Orange
CHERRIES:		
Special 1 1/4 in. and up, 6-8 ft.	\$4.00
Extra 1 in. to 1 1/8 in., 6-7 ft.	3.00
No. 1 3/4 in. to 1 in., 5-7 ft.	2.00
Medium 5/8 in. to 3/4 in., 4-5 ft.	1.50
No. 2 1/2 in. to 5/8 in., 3-5 ft.	1.25
✓ SWEET:		
✓ Bing	✓ Gov. Wood	✓ Windsor
✓ Black Tartarian	✓ Napoleon	✓ Yellow Spanish
✓ Dykeman	✓ Schmidt's Bigarreau	
✓ SOUR: The Caliper governs; not so tall as Sweet-Cherries.		
✓ Early Richmond	✓ Montmorency	✓ May Duke
PLUMS:		
Special 1 1/4 in., 6 to 8 ft.	\$5.00
Extra 1 in. to 1 1/8 in., 5-7 ft.	3.00
No. 1 3/4 in. to 7/8 in., 5-6 ft.	2.50
Medium 5/8 in. to 3/4 in., 4-5 ft.	1.50
No. 2 1/2 in. to 5/8 in., 3-5 ft.	1.00
✓ JAPANESE:		
Abundance	✓ Burbank	✓ Wickson
Bartlett	✓ October Purple	
EUROPEAN:		
Bradshaw	✓ German Prune	✓ Lombard
Felleberg	✓ Green Gage	✓ Shropshire Damson

STANDARD APPLES AND CRABS:

Special 1 1/8 in.	Per 10	Per 100
Extra 1 in., 6-8 ft.	\$3.50	
No. 1 3/4 in. and up, 5-7 ft.	3.00	\$25.00
Medium 5/8 to 3/4 in., 4-6 ft.	2.50	20.00
No. 2 1/2 to 5/8 in., 3-5 ft.	1.75	
		1.25	

- | | | |
|--------------------|-------------------|----------------------|
| ✓ Baldwin | ✓ Greening, R. I. | ✓ Sweet Bough |
| ✓ Ben Davis | ✓ Jonathan | ✓ Talman Sweet |
| ✓ Delicious | ✓ King | ✓ Wagener |
| ✓ Duchess | ✓ McIntosh | ✓ Wealthy |
| ✓ Early Harvest | ✓ Northern Spy | ✓ Winesap |
| ✓ Early Strawberry | ✓ Red Astrachan | ✓ Winesap, Stayman |
| ✓ Fall Pippin | ✓ Russet, Golden | ✓ Winter Banana |
| ✓ Fameuse | ✓ Russet, Roxbury | ✓ Wolf River |
| ✓ Gravenstein | ✓ Rome Beauty | ✓ York Imperial |
| ✓ Grimes' Golden | ✓ Spitzenberg | ✓ Yellow Transparent |
| ✓ Greening, N. W. | ✓ Stark | |

CRABS:

- | | | |
|----------|----------------|----------------|
| ✓ Hyslop | ✓ Red Siberian | ✓ Transcendant |
|----------|----------------|----------------|

DWARF APPLES:

Extra 3/4 in. and up	Per 10	
No. 1 5/8 to 3/4 in.	\$4.00	
Medium 1/2 to 5/8 in.	3.00	
		2.00	
✓ Baldwin	✓ King	✓ Yellow Transparent	
✓ Fall Pippin	✓ Northern Spy	✓ Wealthy	
✓ Greening, N. W.	✓ Red Astrachan		

STANDARD PEARS:

Special 1 1/4 in. and up, 6-8 ft.	Per 10	Per 100
Extra 7/8 to 1 in., 6-7 ft.	\$4.50	
No. 1 3/4 to 7/8 in., 5-7 ft.	3.00	\$25.00
Medium 5/8 to 3/4 in., 4-5 ft.	2.75	15.00
		1.75	
✓ Bartlett	✓ Duchesse	✓ Sheldon	
✓ Clapp's Favorite	✓ Kieffer	✓ Vermont Beauty	
	✓ Seckel		

DWARF PEARS:

Extra 7/8 to 1 in., 3-4 ft.	Per 10	
No. 1 3/4 to 7/8 in., 3-4 ft.	\$2.50	
Medium 5/8 to 3/4 in., 2-3 ft.	2.00	
		1.50	
Bartlett	✓ Duchesse	✓ Seckel	

PEACHES:

Special 3/4 to 1 in., 5-7 ft.	Per 10	Per 100
Extra 5/8 to 3/4 in., 5-6 ft.	\$2.00	
No. 1 9/16 to 5/8 in., 4-6 ft.	1.25	\$12.00
Medium 1/16 to 9/16 in., 4-5 ft.	1.00	8.00
No. 2 5/16 to 7/16 in., 3-4 ft.	.80	6.00
No. 3 Branched, 2-3 ft.	.60	4.00
		.40	3.00
✓ Belle of Georgia	✓ Fox Seedling	✓ Ray	
✓ Carman	✓ Greensboro	✓ Stephens' Rarripe	
✓ Champion	✓ Hiley	✓ Susquehanna	
✓ Crawford Early	✓ Iron Mountain	✓ Stump	
✓ Crawford Late	✓ Mountain Rose	✓ Willett	
✓ Elberta	✓ Miss Lola	✓ Yellow St. John	
✓ Fitzgerald	✓ Oldmixon		

GRAPES: Heavy roots and Long Tops for retail trade. Two and Three Years; transplanted.

✓ Concord	Per 100	\$6.00
✓ Agawam	Per 100	7.00
✓ Brighon	Per 100	8.00
✓ Catawba	Per 100	8.00
✓ Delaware	Per 100	8.00
✓ Diamond	Per 100	8.00
✓ Moore's Early	Per 100	8.00
✓ Niagara	Per 100	8.00
✓ Salem	Per 100	8.00
✓ Worden	Per 100	8.00
✓ Campbell's Early	Per 100	8.00
✓ Green Mountain	Per 100	8.00

CURRENTS: Two and Three Years; transplanted.

✓ Black Champion	Per 100	\$4.00
✓ Cherry	Per 100	5.00
✓ Fay's Prolific	Per 100	5.00
✓ White Grape	Per 100	5.00

GOOSEBERRIES: Three Years.

✓ Downing and Houghton	Per 100	\$8.00
------------------------	---------	--------

From "THE FLORISTS EXCHANGE" of August 25, 1917

Princeton Nurseries, Princeton, N. J.

These nurseries, in which Wm. Flemer of Springfield, N. J., who is also head of the F. & F. Nurseries in Springfield, with his son, Wm. Flemer, Jr., who has joined the colors and who will be somewhere in France until the war has been brought to a conclusion, together with John Watson, who acts in an executive capacity, are interested, were begun some three years ago with the object of creating purely a wholesale nursery business. They extend at present to over 250 acres, of which 175 acres are already planted. They occupy undulating varied ground, some of it among the highest ground in the neighborhood, while other parts dip down to the level of the brooks and a lake that exists there.

The location is ideal and the soil is of a sandy loamy character, which should insure a fibrous root system, and make for a good type of tree for transplanting.

New offices have already been built, these being of timber construction, plastered at the lower half and washed a very effective creamy color, contrasting well with the dark chocolate beams. The pillars of the porch are of rounded stone, which is found in the fields around. These roomy offices were from designs by Mr. Flemer himself, and the completed structure was much admired by a party of visitors who had come down from New York after attending the meeting of the Ornamental Growers' Association, Thursday, Aug. 9.

The interior woodwork and office furniture is made of mahogany.

Large stocks of street trees which include Lombardy, Carolina and the Gray Poplars; also Western Plane, Ginkgoes and Norway Maple, Catalpas, Lindens and other such favorites are coming along, some of them now at the largest sizes that are wanted, namely trees up to 12 ft. to 14 ft. high.

Ornamental stock, especially in all lines that are regularly called for, including Spiraea Van Houttei, Spiraea Anthony Waterer, Weigela, Forsythia, Deutzia gracilis, Calycanthus floridus, Berberis Thunbergii and Hydrangeas in variety, Rhodotypos kerrioides and all such, are grown, not by the hundreds but by the thousands. Some of these are in their first or second year, and making bushes up to 3½ ft. to 4 ft. high; the average run about 30 in. to 3 ft.

We particularly noted also a large planting of own-root Lilacs, forming a large collection of standard varieties, young stock 1 ft. high planted this spring.

Those who want quantities of Myrica cerifera, the Candleberry, will also find their needs supplied here.

Euonymus Sieboldi, a perfectly hardy evergreen for hedges, was noted in a thrifty condition, as indeed was everything in the nursery.

The whole stock is in the full flush of vigor and cleanliness, the propagation and cultivation being in the hands of Frank Waterhouse, who has been with Mr. Watson for many years in the wholesale business and who received his tuition in propagation under John Rock, one of

the most successful men of his day. Mr. Waterhouse was complimented by the skilled nurserymen present on the cleanliness of the grounds and of the shapely, thrifty stocks under his care.

Attention might be called also to the several varieties of Tamarix, as gallica, africana, glauca and aestivalis, to Lonicera Ruprechtiana, a fine bush Honeysuckle with pink blossoms, and notably handsome for its berries; to the good stock of Bechtel's Crab; also Prunus Pissardi, growing strongly and now 2½ ft. to 3 ft. high; fine planting of the Rosa Wichuriana, large plants two years old; American Judas Tree, with growth 6 ft. long; cut-leaved Maples standards, also cut leaved Sumach, Cockspear Hawthorn, the latter two at 4 ft. to 5 ft. high. Sea Buckthorn, admirable for sea shelter planting was also seen here; Callicarpa purpurea, not so much planted by any means as it should be; Hypericum aureum, an excellent Autumn bloomer; Buddleia variabilis, another good August blooming shrub, which was making an excellent showing, while of Rugosa Roses, which are so useful in a dozen directions, the stock is ample, and excellent in the truest sense of the term.

Hybrid tea Roses are not grown to any large extent so far, as the object at present is to test out the kinds that are likely to do best. We noted the Killarneys, Ophelia, Mrs. Laing, Gruss an Teplitz and Caroline Testout flourishing and where they do well others will succeed, so that in time there is no reason why the Princeton Nurseries should not be notable also for Roses.

The collection of two-year old Privet with eight to eleven branches, forming splendid bushy specimens, is a large one, covering several acres. There is also a moderate stock of the small leaved Golden Privet, while Regal's Privet is to be had in quantities, suitable to the demand. Likewise the Snowberry, Symphoricarpos racemosus, is planted liberally, and leaves no opportunity for cavil.

We have not mentioned the large plantings of fruit trees, including Apple, Pear, Cherry and Peach, but the stock of these runs into thousands, and likewise leaves nothing to be desired.

A collection of hardy plants, particularly of the kinds most in demand, is being added, while of Conifers there should be in time one of the best collections in New Jersey.

There are now good stocks coming along of Juniperus virginiana glauca; Japanese Box, some fine bushy plants now at 10 in.; Taxus brevifolia, Biota Rosedale Hybrid, American Arborvitae, 2½ ft. to 3 ft. high, Biota aurea, Retinospora filifera, Biota elegantissima, also the handsome variety spiralis, together with Pfitzeri, Juniper striata, japonica, communis and others.

A large packing shed is being built and, as a switch line runs into the nursery, stock can be laid up and taken to the main line and in that way disseminated with the utmost expedition and speed.

One looks forward to visiting the Princeton Nurseries again after a year or two, with much interest, as all the plans are shaping so well for the utmost success there.

The Nomenclature followed in this list is that adopted by the American Association of Nurserymen.

All Photographs of Nursery Stock and Buildings were taken in our nurseries in August, 1917, by Turner, Photographer, Princeton.

INSPECTION CERTIFICATE

STATE OF NEW JERSEY
THE DEPARTMENT OF AGRICULTURE

ALVA AGEE, SECRETARY

Bureau of Statistics and Inspection

FRANKLIN DYE, CHIEF

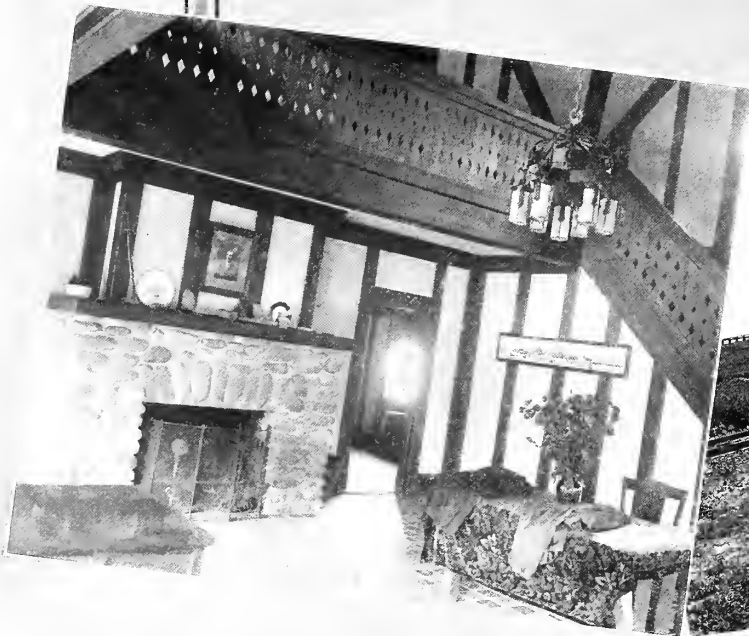
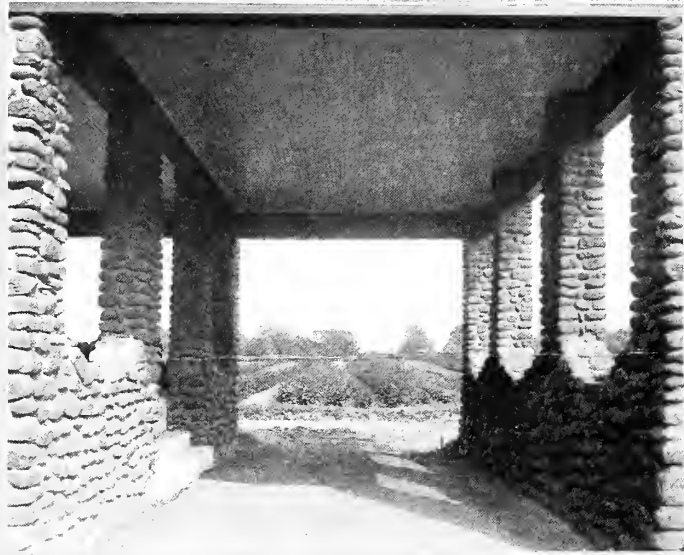
No. 8-1917

Trenton, N. J., September 1st, 1917

This is to Certify That we have this 24th day of August, 1917, in accordance with the provisions of Chapter 268, Laws of 1916, State of New Jersey, inspected or caused to be inspected by a duly appointed Inspector the general nursery stock growing in the PRINCETON NURSERIES of Princeton Nurseries proprietors, at PRINCETON, in Mercer County, NEW JERSEY, and have found the same apparently free from San Jose Scale and other dangerously injurious insect pests and dangerously destructive plant diseases.

This certificate expires June 1st, 1918, and covers only stock actually in the nurseries when examined.

THOMAS J. HEADLEE, State Entomologist
MEL. T. COOK, State Plant Pathologist
HARRY B. WEISS, Chief Nursery Inspector



*Our New Office—just completed
Entrance Hall*

Through the Porte-cochere

*Private Office
Side-track at Princeton Nurseries; Cellar-storage
and Packing House just going up*